

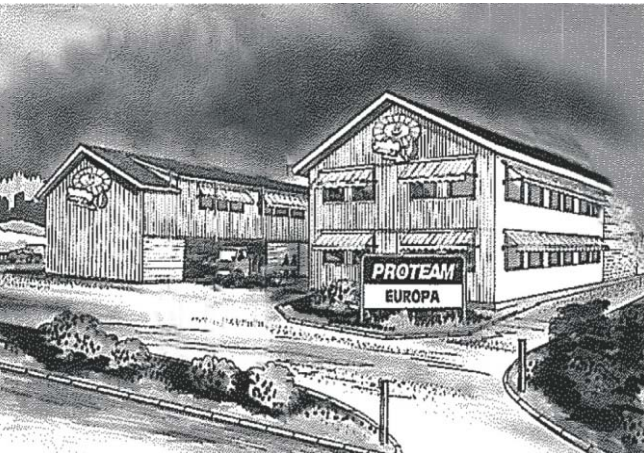
Proteam air-source heat pumps are specially designed for residential buildings and single-family villas. The design of the heat pump respects the elegance and comfort look of the rooms and saves a lot of space.



Certifications



**Proteam
Air Source Heat Pump
for House Heating
C3 - models**



PROTEAM Europa Norway 1972

PROTEAM Europa was started as Klimateknik in 1972 in Norway by Siv. Ing. Harald Einevoll. For many years PROTEAM has been developing and producing high quality heat pumps.

As energy costs continue to rise, governments in many countries across the globe are committing to reduce energy usage. As a result, systems that are able to reduce energy usage and consumption are becoming more and more important. Heat pumps represent a highly-efficient and environmentally-friendly technology as most of the energy required to generate heat is taken from the freely-available surrounding air, a renewable and inexhaustible source of energy.

This is why heat pumps have become one of the best low-cost options to produce "Green Energy".



PROTEAM: The leader in Heat Pump Technology

★ Innovations of the Year:

Proteam Corrugated Golden Evaporator. (Energy Collector)
New Fan Blade design with ultra wide Airflow.

In addition to all of the standard features in Proteam Heat Pumps, our innovation gives you Higher COP, Higher Energy Gain, Less energy Consumption and Less noise.

★ Practical functions.

EEV(Ele. Expansion valve) for system; bottom-pan heating to prevent ice-formation around base of unit, waterproof display and easy operation LCD control panel;

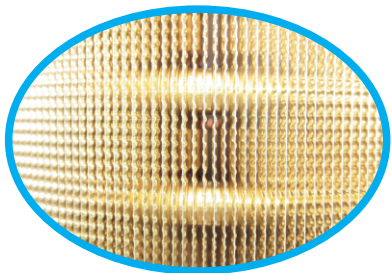
★ Value: best prices on the market for the performance and quality you get:

Proteam has many years of experience in efficient production, long-lasting relationships with suppliers of quality components and low-cost distribution system.

Innovations:

★ Corrugated Golden Proteam Evaporator. (Energy Collector)

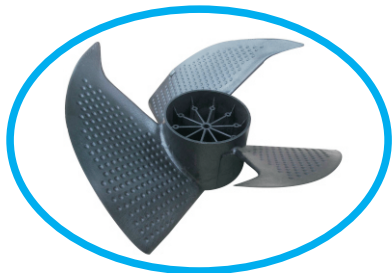
Our new Proteam Evaporator increases the efficiency with 25 to 30%.



Innovations:

★ New Fan Blade design with ultra wide Airflow.

Wider and more uniform airflow results in less energy loss, and more efficient evaporator.



Specifications						
Code	Unit	PRW13HC3-1	PRW22UC3-3	PRW44UC3-3	PRW50UC3-3	PRW65UC3-3
Max Output	kW	13	22	44	50	65
Heating Capacity	kW	11.5~12.8	19.5~21.6	39.5~43.5	44.5~48.5	58.5~64.5
COP at 55° C		4.3	4.3	4.3	4.3	4.3
Hot Water Generated	L / h	250	420	850	900	1260
Input Power	kW	2.7	4.6	9.2	10.4	13.6
Max. Input Power	kW	3.4	5.6	12.1	13.8	16.9
Running Current	A	12.8	8.1	16.5	18.9	24.3
Max. Running Current	A	16	10	21.6	24.7	30.5
Power Supply	V/PH/HZ	220V~ 50Hz	380V~ 50Hz	380V~ 50Hz	380V~ 50Hz	380V~ 50Hz
Compressor	Type	Scroll	Scroll	Scroll	Scroll	Scroll
	Number	1	1	2	2	3
Heat Exchanger Type	High efficiency tube in shell heat exchanger					
Throttling Device	Electric Expansion Valve (E.E.V)					
Fan	Low noise high efficiency axial type					
	Type					
	Discharge	Vertical	Vertical	Vertical	Vertical	Vertical
	Quantity	1	1	2	2	3
	Power Input (W)	250	250	250 x 2	250 x 2	250 x 3
Refrigerant	RPM	830	850	850 x 2	850 x 2	850 x 3
	R410a					
	Low-Pressure Protection	Yes				
	High-Pressure Protection	Yes				
	Water Flow Switch	No				
Water Flow Rate	m3/h	2.0	2.5	5.0	6.5	7.3
Thermostat Factory Setting	° C	55	55	55	55	55
Thermostat Maximum Setting	° C	60	60	60	60	60
Water Connections	inch	G 1"	G 1"	G 1-1/2"	G 1-1/2"	G 2"
Water-side pressure loss	kpa	20	40	40	70	75
Water proof level		IPX4	IPX4	IPX4	IPX4	IPX4
Working Air Temp. Range	° C	-10 to 45	-10 to 45	-10 to 45	-10 to 45	-10 to 45
Noise	dB(A)	54	56	59	60	61
Cabinet	Metal Casing with Powder Coated					
Unit Dimension (mm)	L / W / H	700*670*965	820*820*1160	1570*820*1165	1570*820*1165	2150*764*1402
Packing Dimension (mm)	L / W / H	740*710*1080	860*860*1275	1610*900*1320	1610*900*1320	2270*830*1570
Net weight / Gross weight	kg	111/129	145/165	268/289	293/315	437/497

Measuring Conditions: Dry bulb 20° C, wet bulb 15° C, Water heated from 15° C to 55° C



Model name: PRW13HC3-1
Output: 11.5~12.8kW
Input: 2.7kW
L x H x W: 700*670*965mm



Model name: PRW22HC3-3
Output: 19.5~21.6kW
Input: 4.6kW
L x H x W: 820*820*1160mm



Model name: PRW44UC3-3
Output: 39.5~43.5kW
Input: 9.2kW
L x H x W: 1570*820*1165mm



Model name: PRW50UC3-3
Output: 45.5~48.5kW
Input: 10.4kW
L x H x W: 1570*820*1360mm



Model name: PRW65UC3-3
Output: 58.5~64.5kW
Input: 13.6kW
L x H x W: 2150*764*1402mm