

I. Key Parameter:

Parameter	Result	Low Reference limit of WHO 5th
pH:	7.2	>7.2
Concentration	32.8 M/ml	15 M/ml
Normal Morphology	4%	4%
Total Motility	73% (MSC:23.9 M/ml)	40%
Progressive (PR)	65% (PMSC:21.3 M/ml)	32%

Note:

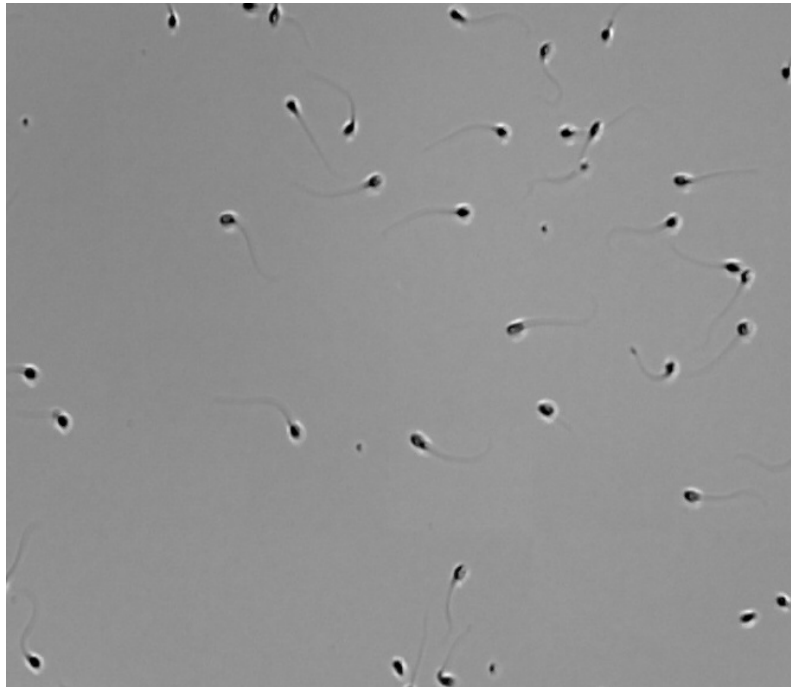
- MSC: Motile Sperm Concentration.
- PMSC: Progressive Motile Sperm Concentration.

II. Detail Parameter:

Total Motility: 73 %		
Progressive (PR): 65 % Non-Progressive (NP): 8 % Immotility (IM) : 27 %		Motile (VAP > 25µm/s): 45 % Local Motile (5µm/s < VAP < 25µm/s): 20 %
(µm/s)	(%)	(µm, Hz)
VAP (Mean) 33 µm/s VSL (Mean) 30 µm/s VCL (Mean) 46 µm/s	LIN (Mean) 64 % STR (Mean) 89 % WOB (Mean) 71 %	ALH (Mean) 2.91 µm BCF (Mean) 6.90 Hz
VAP Distribution	STR Distribution	ALH Distribution
[0-5µm/s] 5 [5-15µm/s] 17 [15-25µm/s] 18 [25-35µm/s] 18 [35-45µm/s] 5 [45+µm/s] 37 Total 100 %	[0-10%] 3 [10-20%] 0 [20-30%] 0 [30-40%] 0 [40-50%] 1 [50-60%] 1 [60-70%] 6 [70-80%] 0 [80-90%] 24 [90-100%] 65 Total 100 %	[0-2µm] 27 [2-4µm] 53 [4-6µm] 20 [6-8µm] 0 [8-10µm] 0 [10-12µm] 0 [12+µm] 0 Total 100 %
VSL Distribution		
[0-5µm/s] 6 [5-15µm/s] 17 [15-25µm/s] 18 [25-35µm/s] 22 [35-45µm/s] 12 [45+µm/s] 25 Total 100 %		
Normal Morphology: 4 %		
Assessed parameters	Mean ± SD	Range (min - max)
Head Length(µm):	5.56 ± 0.88	3.82 - 8.02
Head Width(µm):	3.25 ± 0.35	2.53 - 4.10
Head Perimeter(µm):	13.65 ± 1.57	10.77 - 18.88
Head Area(µm ²):	13.56 ± 2.39	9.04 - 21.45
Tail Length(µm):	30.03 ± 11.73	0.93 - 58.76

III. Other Reference Parameter:

Parameter	Result	Low Reference limit of WHO 5th
Volume	N/Aml	1.5ml
Color	N/A	N/A
Liquefaction Time	N/A	≤ 60 min
Total Sperm number	N/A	39M



Inspector Signature: _____

IV. Diagnose & Comment:

Dr. Signature: _____